

SUPER-12®

12-STRAND UHMWPE SINGLE BRAID

Heat-Treated with Abrasion-Resistant Coating

APPLICATIONS

- ▶ Wire rope replacement
- ▶ Winch lines
- ▶ Towing
- ▶ Lifting

FEATURES

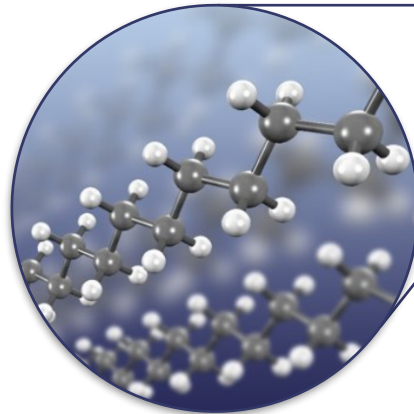
- ▶ Extreme strength-to-weight ratio
- ▶ 15 x stronger than steel
- ▶ Safer than wire (low recoil)
- ▶ Hydrophobic fibre (no water absorption)
- ▶ Floats
- ▶ Low creep
- ▶ Easy to splice
- ▶ Resistant to kinking
- ▶ Maintains high strength around tight-radius bends
- ▶ Exceptional UV and chemical resistance
- ▶ Abrasion-resistant coating reduces likelihood of snagging and provides superior winch drum grip

TECHNICAL

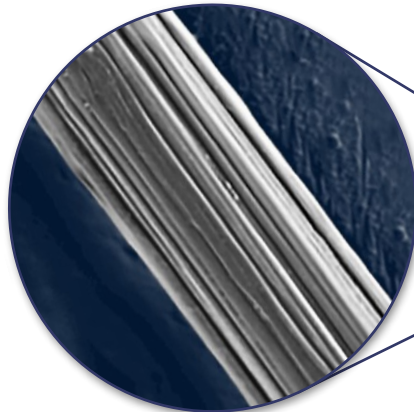
- ▶ Ultra-high molecular weight polyethylene
- ▶ 32 cN/dtex tenacity
- ▶ 3.5% elongation at break
- ▶ 0.98 g/cm³ density

OPTIONS

- ▶ Available in 3 constructions:
 - ▶ Single strand (1 – 9 mm)
 - ▶ Double strand (10 – 38 mm)
 - ▶ Braid-on-braid (40 – 105 mm)
- ▶ Custom colours (silver-grey standard)
- ▶ Protective cover braid
- ▶ Larger diameters
- ▶ Spliced eyes
- ▶ Thimbles
- ▶ Proof loading with certificate



Simple Polymer with Outstanding Performance Characteristics



Highly Orientated Fibres for Increased Strength







Braided Construction Allows for Easy Splicing

SUPER-12®

12-STRAND UHMWPE SINGLE BRAID

Heat-Treated with Abrasion-Resistant Coating

STANDARD RANGE

Diameter (mm)	Average Break Load (tonne)		Diameter (mm)	Average Break Load (tonne)	
3	1.3		22	47.0	
3.5	1.7		24	55.0	
4	2.2		26	64.5	
5	3.1		28	73.5	
6	4.0		30	82.5	
7	5.2		32	84.6	
8	6.6		36	106.8	
9	8.3		38	118.0	
10	9.6		40	131.0	
11	10.9		44	157.0	
12	12.5		48	181.0	
13	15.0		52	201.0	
14	17.5		56	230.0	
15	20.0		60	268.0	
16	21.2		64	320.0	
16.5	23.5		68	360.0	
17	26.0		72	400.0	
18	30.0		76	450.0	
19	33.0		80	500.0	
20	38.8		105	850.0	

Tel: +27 (0)21 448 4978 Fax: +27 (0)21 447 8207 Email: sales@southernropes.co.za
 2 - 4 Beach Road Woodstock 7915 Cape Town Western Cape South Africa
 P.O. Box 65 Woodstock 7915 Western Cape South Africa